

panoRama Film8020

A PVC-free, non-adhesive, interior mount, perforated window film.

Use with panoRama Tape for an easy self-install window graphic.

No adhesive makes panoRama Film8020 a great solution for a wide variety of applications.

100% recyclable where accepted.

APPLICATIONS

- Retail Windows - POP
- Ceiling-Hung Graphics
- Hanging Backdrops
- Room Dividers
- Inside Mount Window Applications with panoRama Tape

panoRama Film8020

MATERIAL

Face Film	Printable White Perforated PET
Back Side	Black for Maximum Contrast
Adhesive	None
Liner	Removable Liner with Polyester Backing - 2 mil (50µ +/-10µ)
Film Thickness	6 mil (150µ +/-10µ)
FR Certification	Not tested

DURABILITY

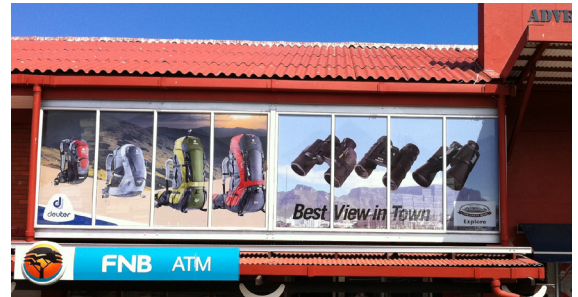
Interior	Up to 3 Years
Exterior	Not Recommended
Environment	Humidity & Solvent Resistance - Good (Indoor Applications Only)
Shelf Life	1 Year
Storage Requirements	Store at +59°F to +77°F (+15°C to +25°C) and Relative Humidity between 20% to 70%.
Repositionable	Short-Term with panoRama Tape

APPLICATION/REMOVAL

Application Temp	+50°F to +86°F (+10°C to +30°C)
Service Temp	+41°F to +104°F (+5°C to +40°C)
Removability	Clean Removal with No Adhesive Residue, up to 6 Months - Adhesion May Increase over Time
Removal Temp	+50°F (+10°C) or Greater
Exclusions	NOT to Be Applied to Fresh Paint, Polycarbonate, and Some PVC (No Exhaustive List Available).

Surface must be clean and dry. Prevent contact with solvent or ammonia-based cleaners. For best results, clean glass or install surface with a mild detergent and water and dry thoroughly prior to application. For full installation & removal instructions, please refer to "panoRama Film8020 Application Recommendations."

**For critical substrates and all surfaces, please test PRIOR to application.*



Printing Methods

- Digital - Solvent, Eco-Solvent, UV, & Latex
- Screen Print



Material Sizes

- 54" x 100'
- 60" x 100'



Advantages

- NO Lamination Needed - Window Protects the Graphic
- PVC-Free Material
- Reusable Graphics When Used without panoRama Tape
- Extremely Versatile Material - Can be Used as an Air Permeable Hanging Banner or Self-Adhesive Inside Mount Window Graphic (When Used with panoRama Tape)
- Repositionable When Used with panoRama Tape

→ For more information

For additional product information, performance, and warranty guidelines please contact Continental Grafix USA, Inc.

704-872-2216 • www.cgxusa.com

panoRama Tape

MATERIAL

Face Film	Optically Clear Polyester
Adhesive Inside	Permanent Clear Acrylic - 1 mil (25µ +/-10µ)
Adhesive Outside	Semi-Permanent Clear Acrylic - .75 mil (19µ +/-10µ)
Liner	Removable Polyester - 1 mil (24µ +/-10µ)
Film Thickness	2 mil (50µ +/-10µ)
FR Certification	Not Tested

DURABILITY

Interior	Up to 1 Year
Exterior	Not Recommended
Environment	Humidity & Solvent Resistance - Good (Indoor Applications Only)
Shelf Life	1 Year
Storage Requirements	Store at +59°F to +68°F (+15°C to +20°C) with a Relative Humidity between 45% to 65%
Repositionable	Yes

APPLICATION/REMOVAL

Application Temp	+50°F to +86°F (+10°C to +30°C)
Service Temp	0°F to +122°F (-17°C to +50°C)
Removability	Clean Removal with No Adhesive Residue, up to 6 Months - Adhesion May Increase over Time
Removal Temp	+50°F (+10°C) or Greater
Exclusions	NOT to Be Applied to Fresh Paint, Polycarbonate, and Some PVC (No Exhaustive List Available)

Surface must be clean and dry. Prevent contact with solvent or ammonia-based cleaners. For best results, clean glass or install surface with a mild detergent and water and dry thoroughly prior to application. For full installation & removal instructions, please refer to "panoRama Film8020 Application Recommendations."

*For critical substrates and all surfaces, please test PRIOR to application.



Printing Methods

- Not applicable



Material Sizes

- 1" x 200'



Advantages

- Makes Installing Interior Window Graphics Easy - No Professional Installer Needed
- Install Window Graphics Any Time of Year
- Keep Window Graphics Safely on the Inside for Less Vandalism
- Designed for Use with panoRama Film8020 and panoRama Film7030

→ For more information

For additional product information, performance, and warranty guidelines please contact Continental Grafix USA, Inc.

1-704-872-2216 • www.cgxusa.com